



**PACKAGING**  
MADE EASY



# Lazy Susan Accumulation Table

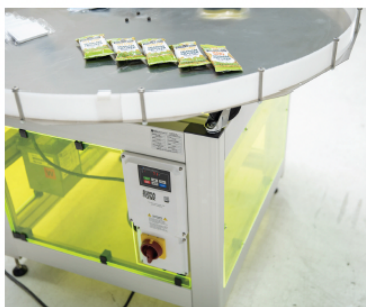
**NOW WITH EASY CLEAN TABLE**

## Perfect add-on for:

- ▶ Shrink Wrap Machine
- ▶ Flow Wrapping Equipment
- ▶ General end-of-line accumulation

## Industries:

- ▶ Bakery
- ▶ Printing
- ▶ Household Goods
- ▶ Cosmetics
- ▶ Pharma and Nutraceutical
- ▶ General manufacturing



Images show Model #DTI200-120-SS

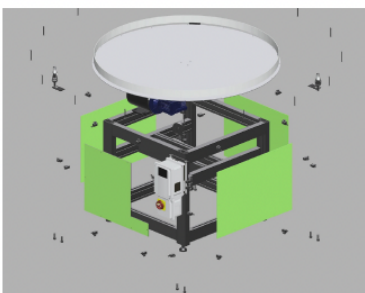
**Designed and Built in the USA**

ISO9001:2015 QMS manufacturing environment

909-263-7600

sales@packagingmadeeasy.net

www.packagingmadeeasy.net



3D design models of unit incl. exploded view

## Available Models

Model	Table diameter	Turn table material	Power requirements
DTI200-120-AL	1200mm (~47.25")	Aluminum	120VAC, 1-phase, 3A
DTI200-120-SS	1200mm (~47.25")	Stainless Steel	120VAC, 1-phase, 3A
DTI200-220-AL	1200mm (~47.25")	Aluminum	220VAC, 1-phase, 15A
DTI200-220-SS	1200mm (~47.25")	Stainless Steel	220VAC, 1-phase, 15A
DTI500-220-AL	1500mm (~59")	Aluminum	220VAC, 1-phase, 15A
DTI500-220-SS	1500mm (~59")	Stainless Steel	220VAC, 1-phase, 15A

**Designed and Built in the USA**

ISO9001:2015 QMS manufacturing environment

